

# FUTURE FACILITIES PROJECT

## BETTER FACILITIES FOR OUR CITY'S FUTURE

**The City of Onkaparinga's population is growing and the needs of our communities are evolving over time.**

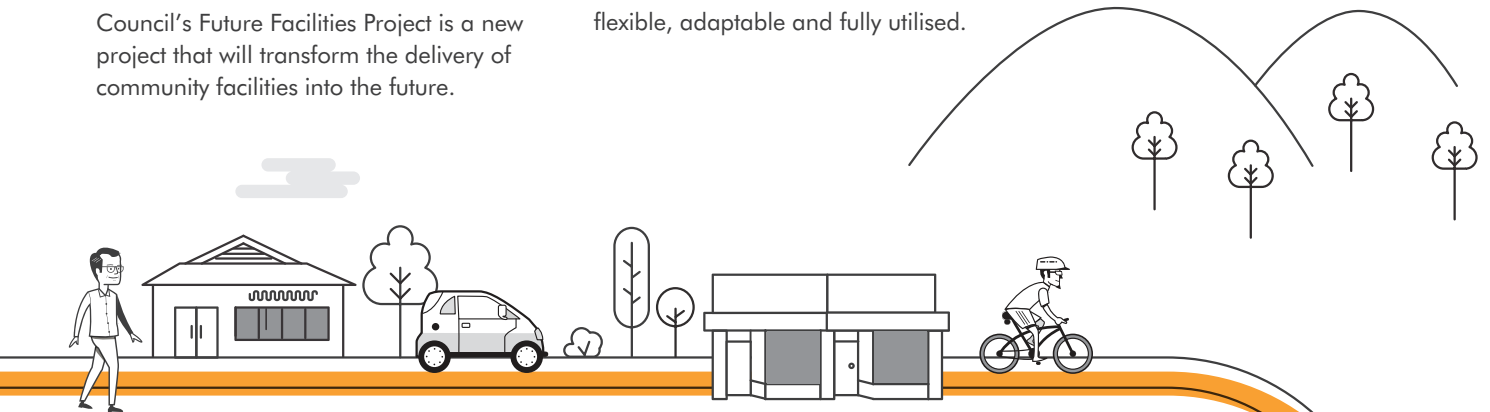
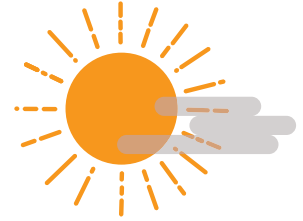
This means council needs to critically assess facilities and land including how they will be used, where they are needed most, and how they can best support residents.

Council's Future Facilities Project is a new project that will transform the delivery of community facilities into the future.

Ageing and underutilised facilities may be repurposed, reutilised, returned to open space or disposed of.

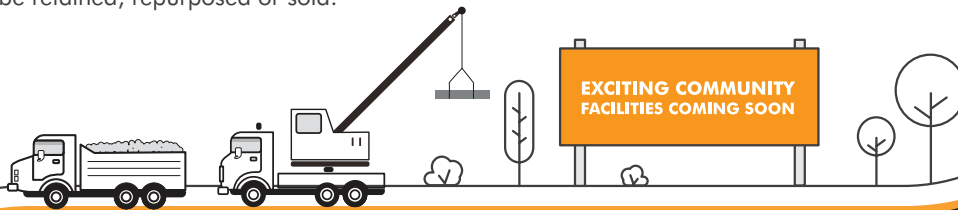
Any income generated will support the development of the facilities our communities need.

Our aim is to ensure our facilities are flexible, adaptable and fully utilised.



### ASSESSMENT AND DISPOSAL

The Future Facilities Project will see council assess buildings or land against a range of criteria to determine whether the sites should be retained, repurposed or sold.



### REINVESTMENT IN OUR CITY

Proceeds from the sale of any council assets will be directed to a Community Investment Fund to deliver community projects that have been identified as a priority. Council will reinvest in land, assets or buildings that serve the community better.



# FUTURE FACILITIES PROJECT

## BETTER FACILITIES FOR OUR CITY'S FUTURE

The Future Facilities Project aligns with our Community Plan.

The following five principles will guide the delivery of the Future Facilities Project.



### FLEXIBLE AND ADAPTABLE

Multi-purpose facilities will support our growing and ageing populations. They will be flexible and adaptive to support the identified needs and aspirations of our local communities now and in the future. They provide an opportunity to work in partnership with others to provide more responsive and holistic programs and services.



### EASILY ACCESSIBLE

All residents of our communities are treated fairly and have equitable access to services. Facilities are strategically located and easily accessible through public and private transport, walking and cycling. They are conveniently located within town centres and are close to other community facilities and local services to provide a 'one stop neighbourhood shop'. Integrated hubs will encourage stronger connections within our communities and closer familiarity with opportunities for learning, growth and social connection.



### EFFECTIVE ASSET MANAGEMENT AND FINANCIAL SUSTAINABILITY

Reinvesting in land, assets or buildings will help provide our community with fit for purpose assets aligned to our strategic direction, strategically manage our balance sheet and avoid the ongoing maintenance and other costs of ageing and under-utilised facilities.



### WELCOMING AND INCLUSIVE PLACES FOR PEOPLE TO GATHER

Our community facilities are lively, welcoming and inclusive. They attract people from across our community of different ages and cultural backgrounds. There will be some services that target specific groups, however our multi-use facilities will play a role in bringing various community groups and individuals together. They offer opportunities for people to connect and build relationships, greatly enhancing community engagement, belonging, social interaction and community experience. Our facilities will foster collaboration and cross-promotion through a community integrated approach.



### OPEN SPACE

Locating facilities adjacent to open space including town squares, district and neighbourhood centres and parks will help increase the range of community building activities and opportunities for social connection.

