

Jessamine Avenue Reserve

Site Location

Reynella



Jessamine Avenue Reserve

Existing Conditions

Reynella



Jessamine Avenue Reserve

Final Design - Overall Plan

Reynella

LEGEND

LANDSCAPE

EXISTING TREE TO REMAIN

PROPOSED TREE - EVERGREEN
(REFER PLANT SCHEDULE & DETAILS)

PROPOSED TREE - DECIDUOUS
(REFER PLANT SCHEDULE & DETAILS)

PROPOSED SHRUBS
(REFER PLANT SCHEDULE & DETAILS)

PROPOSED GRASS / GROUND COVER
(REFER PLANT SCHEDULE & DETAILS)

EXTENT OF WORKS SHOWN THUS

1200mm WIDE COMPACTED GRAVEL FOOTPATH
(REFER DETAILS)

1200mm WIDE CONCRETE FOOTPATH / PAVEMENT
(REFER DETAILS)

1200mm WIDE UNIT PAVING FOOTPATH
(REFER DETAILS)

IRRIGATED LAWN AREA
(INSTANT TURF)

IRRIGATED LAWN AREA
(HYDROSEEDDED)

RUBBER SOFTFALL
(TYPE & COLOUR REFER TO SHEET C09)

300mm DEEP PINE CHIP SOFTFALL
(TO BE APPROVED)

NEW SEAT

NEW SHELTER & PICNIC SETTING

NEW TIMBER PLATFORM

NEW DRINKING FOUNTAIN WITH DOG BOWL

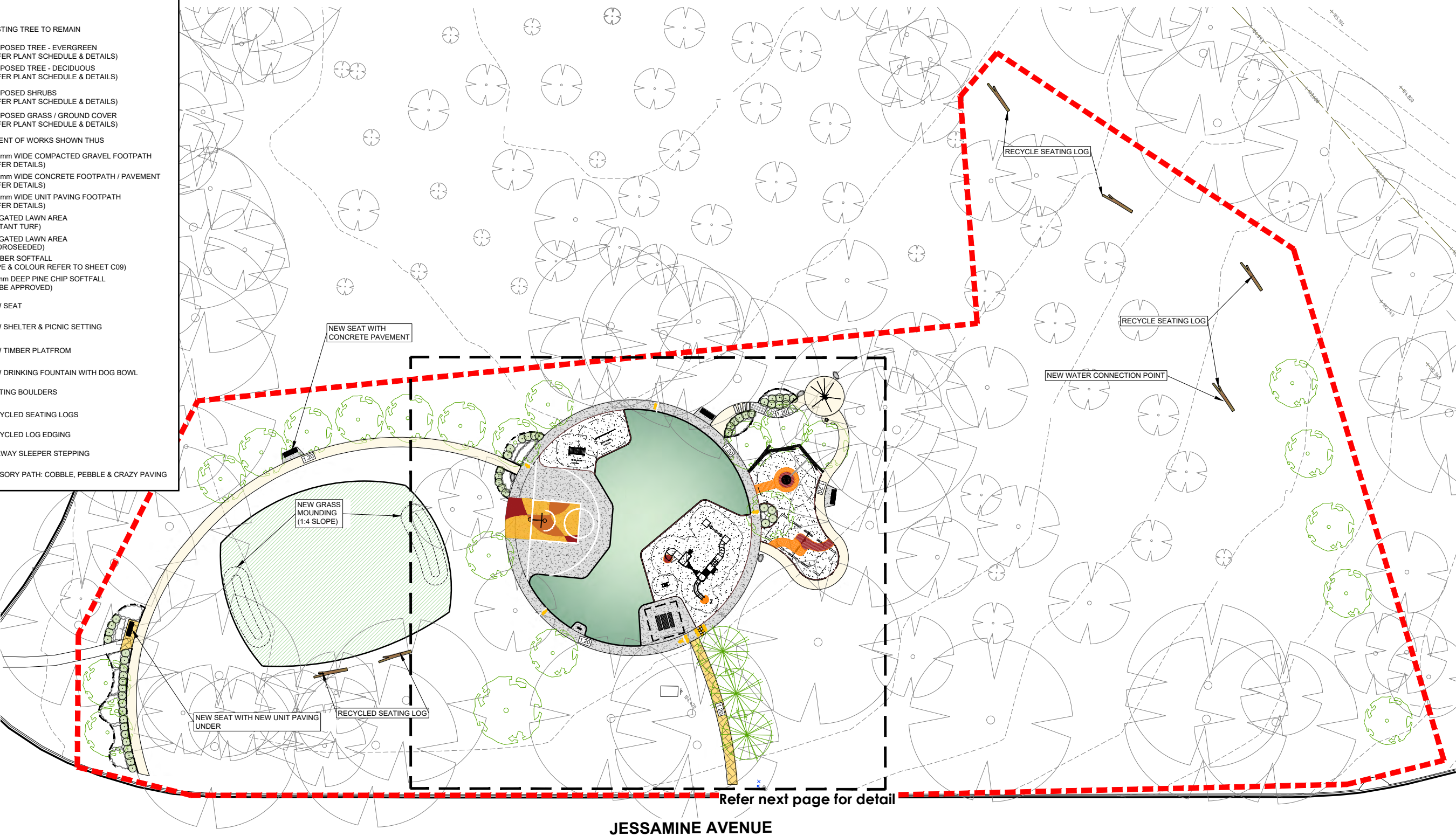
SEATING BOULDERS

RECYCLED SEATING LOGS

RECYCLED LOG EDGING

RAILWAY SLEEPER STEPPING

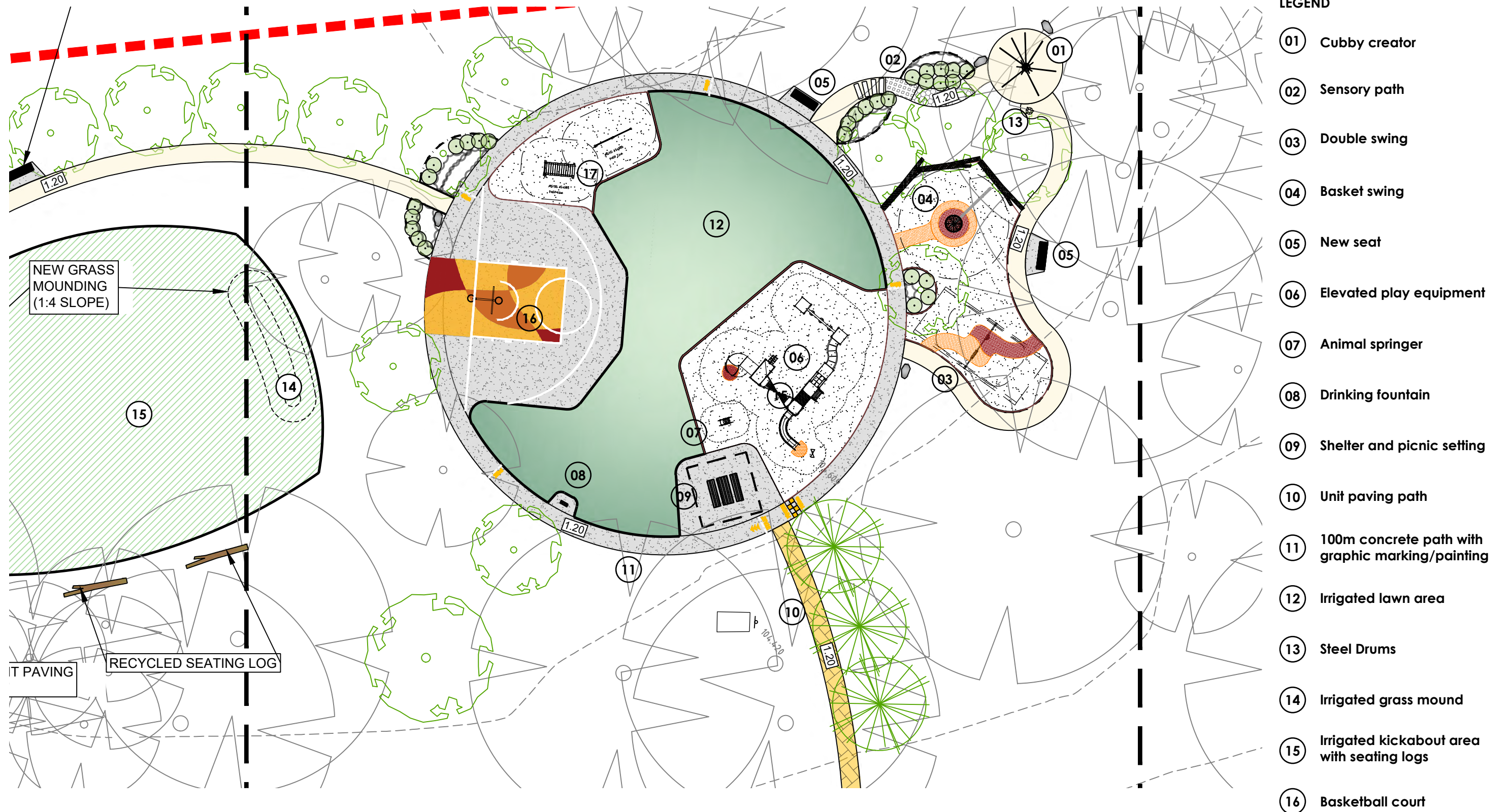
SENSORY PATH: COBBLE, PEBBLE & CRAZY PAVING



Jessamine Avenue Reserve

Final Design

Reynella



Jessamine Avenue Reserve

Proposed Products - Play Equipment

Reynella



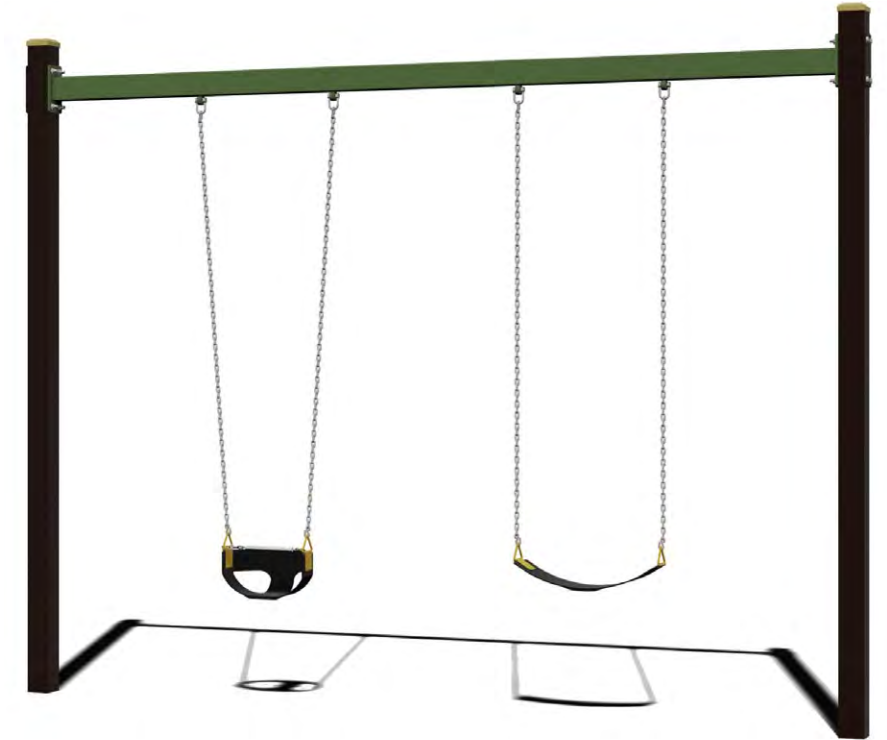
Cubby creator

01



Sensory Path

02



Double Swings (colour to be determined)
Adventure+

03



Basket swing - Tornado (colour to be determined)
Forpark

04



Elevated play - ELV6-1005 (colour to be determined)
Forpark

06



Animal Springer
Adventure+

07

Jessamine Avenue Reserve

Proposed Products - Play Equipment

Reynella



Running track / footpath with Graphics/text

11



Babel Drum (Small)
Percussion Play

13



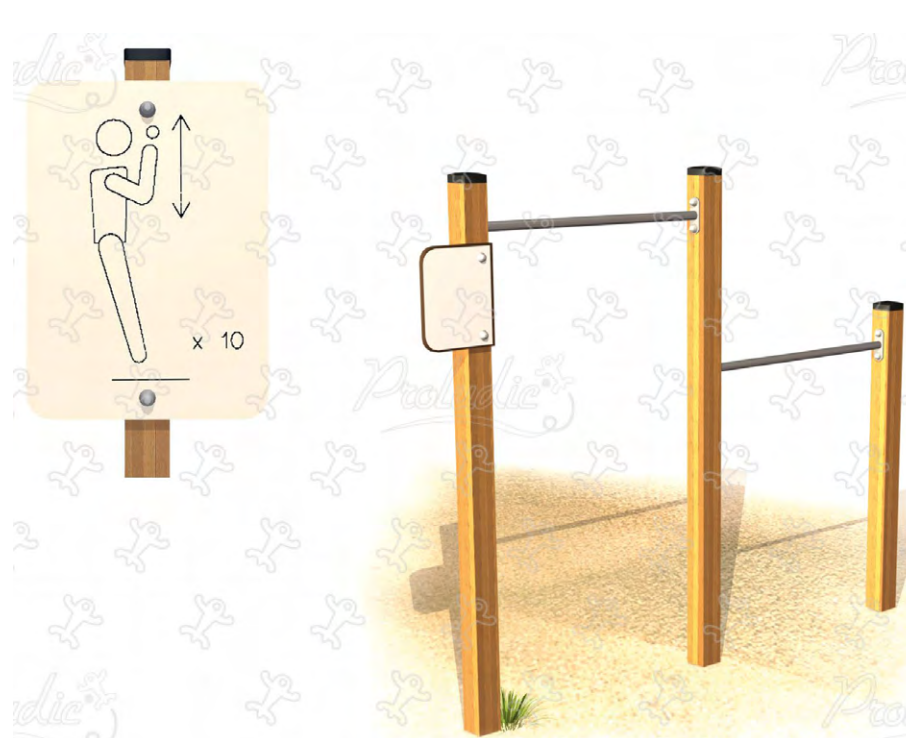
Basketball court tower

16



Abs bench

17



Pullup bars

17

Jessamine Avenue Reserve

Proposed Products - Park Furniture

Reynella



Monaco Timber Seat with armrests
Terrain Group

05



Monaco Timber Setting
Terrain Group

09



Akiva Shelter 4x4m
Terrain Group

09



Apollo 280 with dog bowl
Urban+ Fountains & Furniture

08