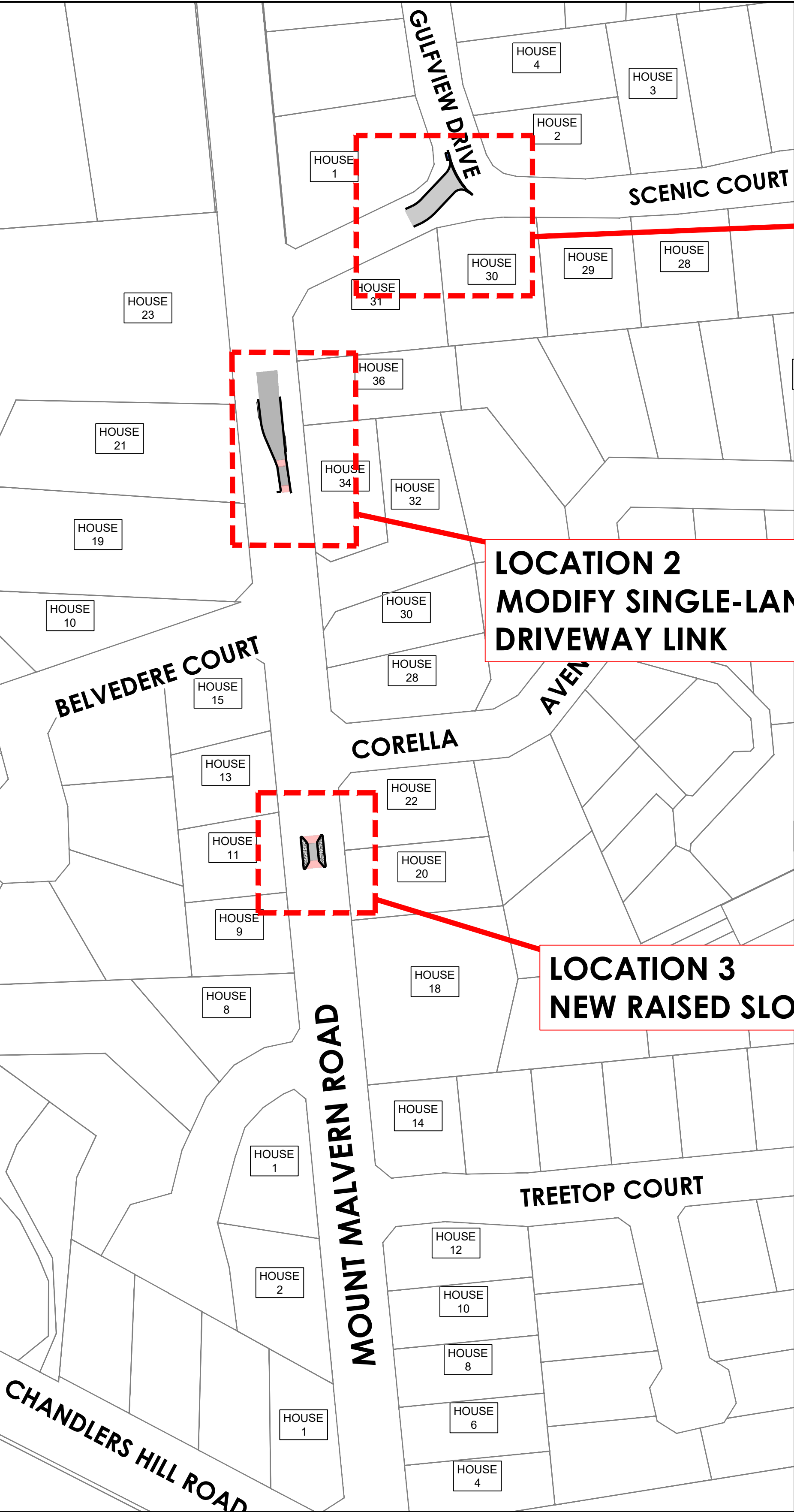
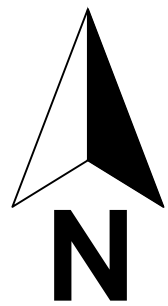
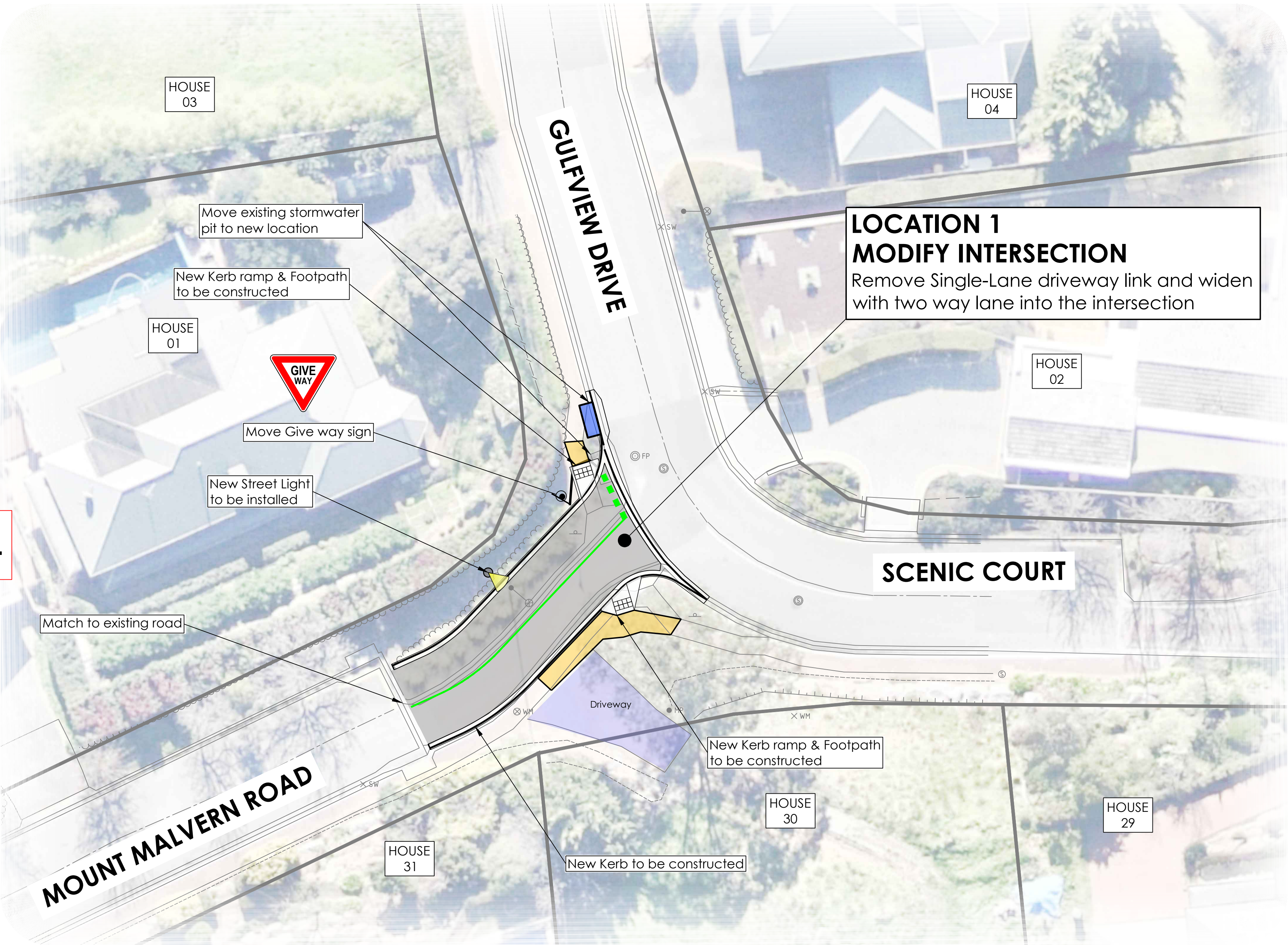


MOUNT MALVERN ROAD

PROPOSED TRAFFIC CONTROL PLAN

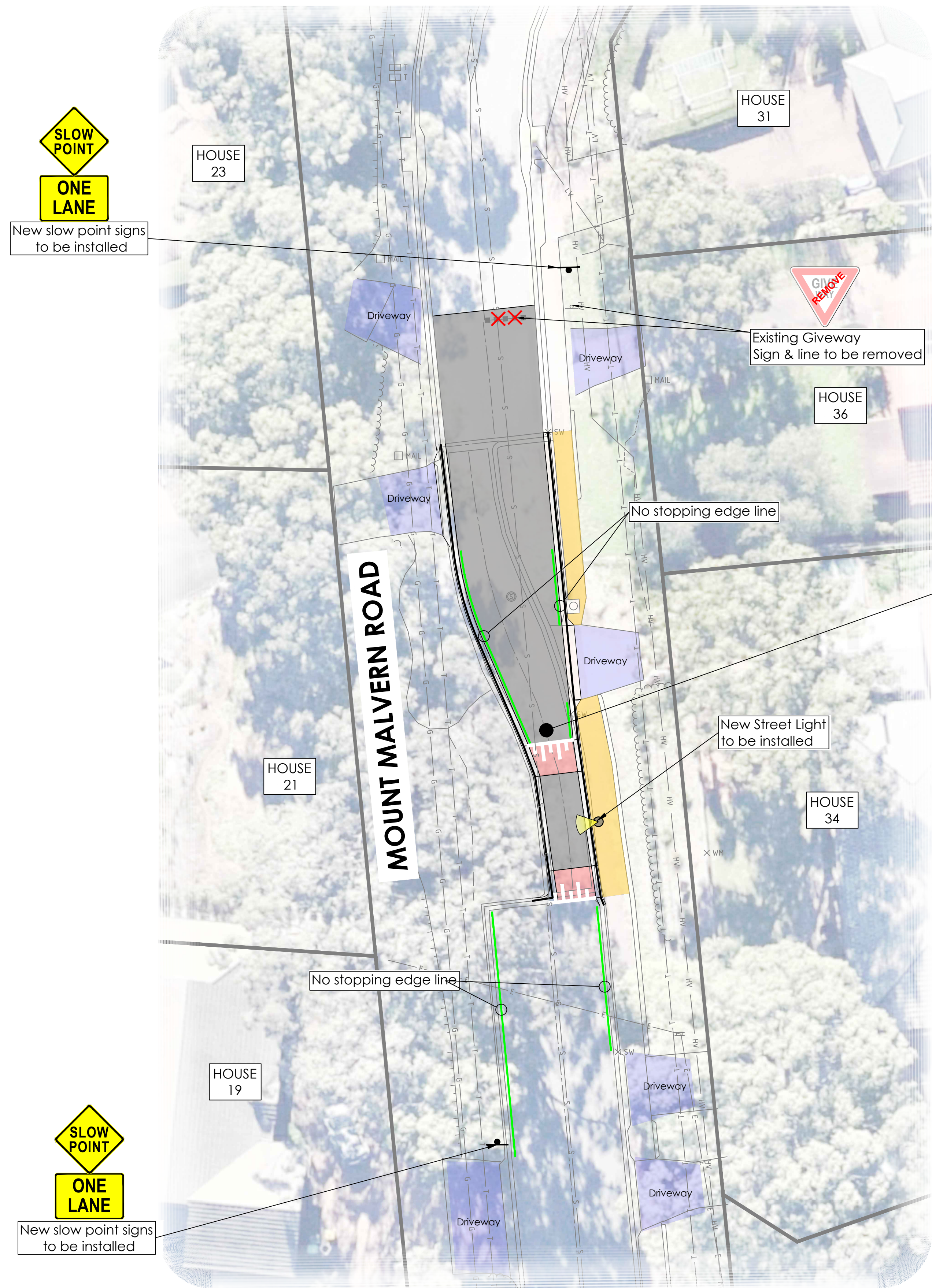
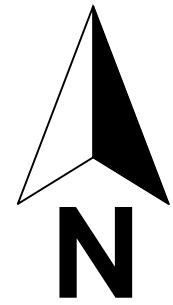


LEGEND					
GENERAL					
<div></div>	Asphalt	<div><div>150 K&G</div><div></div><div></div></div>	150 Upright kerb & gutter	<div><div>DESCRIPTION</div><div></div></div>	Proposed No Stopping Line
<div></div>	Footpath	<div><div>SOK</div><div></div><div></div></div>	Sit-on kerb	<div><div></div></div>	Proposed Street Light
<div></div>	Proposed Stormwater Pit	<div><div></div></div>	Kerb ramp	<div><div>Driveway</div></div>	Existing driveway locations



MOUNT MALVERN ROAD

PROPOSED TRAFFIC CONTROL PLAN

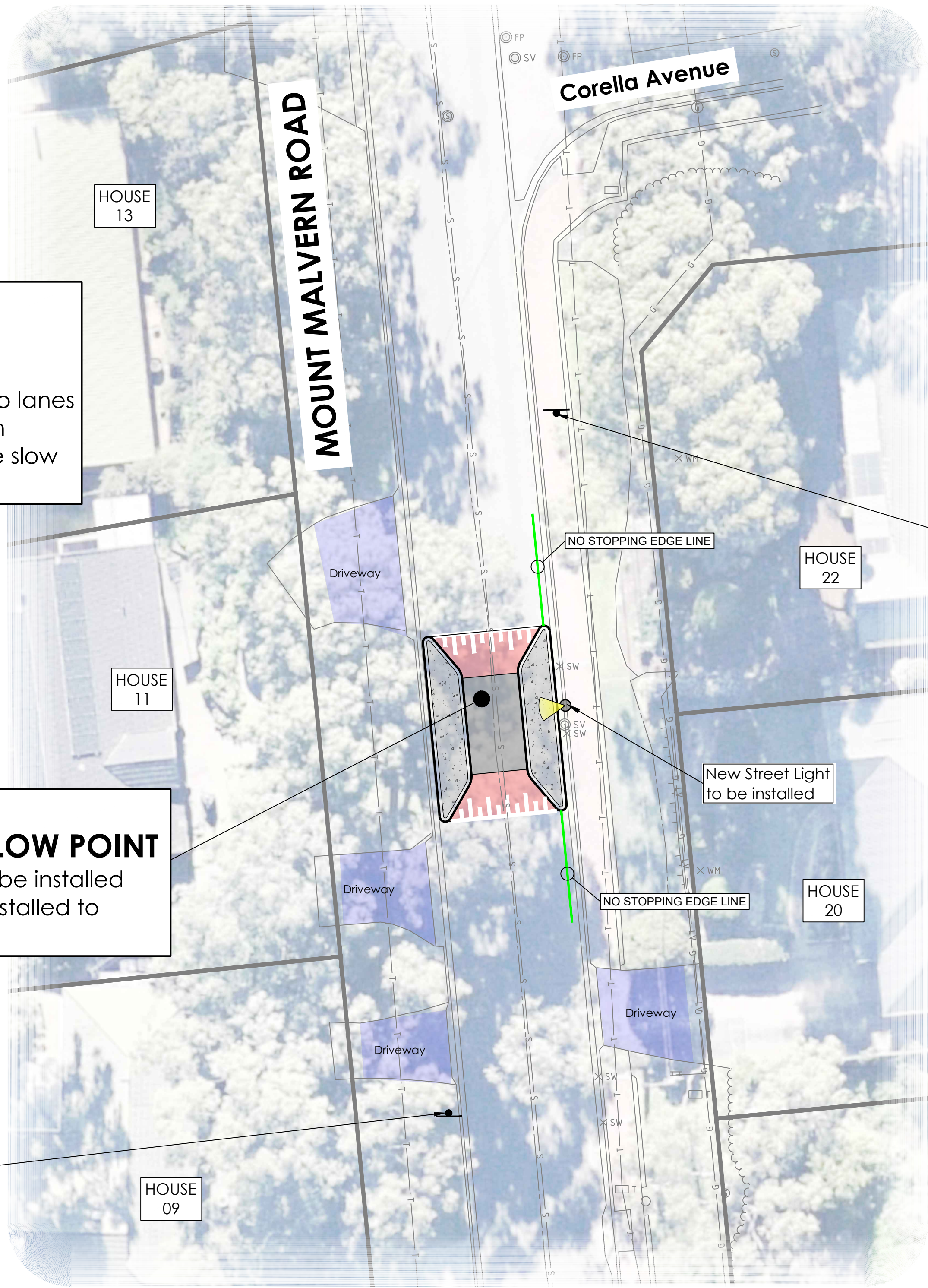


**LOCATION 2
MODIFY DRIVEWAY LINK**
Demolish northern portion of existing single-lane driveway link to allow two lanes through this section, rebuild southern portion with new kerbs as single-lane slow point with raised platform.

**LOCATION 3
NEW RAISED ONE WAY SLOW POINT**
New kerbs and raised platform to be installed with new 'Slow Point' signs to be installed to allow one vehicle through

**SLOW POINT
ONE LANE**
New slow point signs to be installed

LEGEND		DESCRIPTION	
GENERAL			
	Asphalt		150 Upright kerb & gutter
	Footpath		Sit-on kerb
	Proposed Stormwater Pit		Kerb ramp
			Proposed No Stopping Line
			Proposed Street Light
			Existing driveway locations



**SLOW POINT
ONE LANE**
New slow point signs to be installed