

PAUL MURRAY RECREATION CENTRE COMMUNITY AND SPORTS HUB



EXECUTIVE SUMMARY

The City of Onkaparinga & Hub Gymnastics have **identified a great opportunity** to expand the existing Paul Murray Recreation Centre with the inclusion of **Kinder-Gym, community facilities and a spectator viewing area**, coupled with the refurbishment of existing facilities that can create a **highly functional, long lasting community asset**. While the current facilities are well loved and utilised by the local community, Hub Gymnastics and the 50's Plus Activity Group, this project can enable the expansion to **meet needs of all users**, cater for increased community demand and provide a precinct that is well connected to the surrounding public open space, **creating an active and integrated destination** for sporting, recreation and community activities.

CELEBRATING SUCCESS OF GYMNASTICS

Hub Gymnastics is a community gymnastics club that has been offering exceptional gymnastics experiences since 1985. Situated at The Paul Murray Recreation Centre, the Hub's primary focus is to promote participation while ensuring safety, fostering learning, and facilitating fun for all members.

Due to the sport's increasing popularity in South Australia, Hub Gymnastics membership is thriving, leading to an extensive waiting list. This remarkable growth presents the Hub with the opportunity to fulfill the growing demand and maintain its commitment to serving the community.

RESPONDING TO SURROUNDING PRECINCT

The Paul Murray Centre's strong commitment to connecting with the local community and promoting environmental responsibility has played a pivotal role in determining the selection of materials, both for external and internal purposes. We have prioritised the use of locally sourced South Australian materials, not only to maintain a consistent aesthetic with the existing site but also to support local industries and foster community engagement—an essential objective of this project. By consciously selecting materials, we create a harmonious balance between sustainability, aesthetics, and functionality. The Club's approach ensures that our facility not only provides an excellent gymnastics experience but also serves as an environmentally responsible and community-centered space.



PROJECT VISION & KEY PRINCIPLES

PROJECT VISION:

THE PAUL MURRAY CENTRE—A SAFE, INCLUSIVE, AND FUN SPACE FOR ALL IN THE COMMUNITY. WE EMPOWER GYMNASTS TO GROW, LEARN, AND DEVELOP, NURTURING A LIFELONG PASSION FOR THE SPORT. UNLOCKING THE POTENTIAL TO EMBARK ON AN UNFORGETTABLE JOURNEY.



WELCOMING & INCLUSIVE

- Accessible & welcoming arrival
- Accessibility seamless throughout the facility
- All users feel welcome & part of the community
- Recognising the needs of the different user groups



DYNAMIC

- Spaces that evoke pride
- Inspiring users to be part of the active space
- Healthy participation
- Applying the Hub's existing dynamic culture throughout the Centre



FUNCTIONAL

- Focusing on the core purpose of community and sports amenity
- Efficiency & multi-use: Design for functionality, flexibility, and optimal space utilisation
- Dedicated spaces for key users: Tailor areas to meet specific needs, maximizing functionality.



SUSTAINABLE

- Environmentally - building orientation, performance & longevity
- Economically - efficient design, low maintenance & running costs
- Nurturing future gymnasts in a multi-generational space for families, while fostering the growth of centre participation



INNOVATIVE

- Sport promotion: Innovative community engagement
- Achievements recognised: Celebrating gymnasts, coaches.
- Future celebration: Embracing progress, innovation
- Meeting changing demands: Adaptation, proactive program development

A REFURBISHED FACILITY BUILDING ON ESTABLISHED RECREATION & COMMUNITY USE

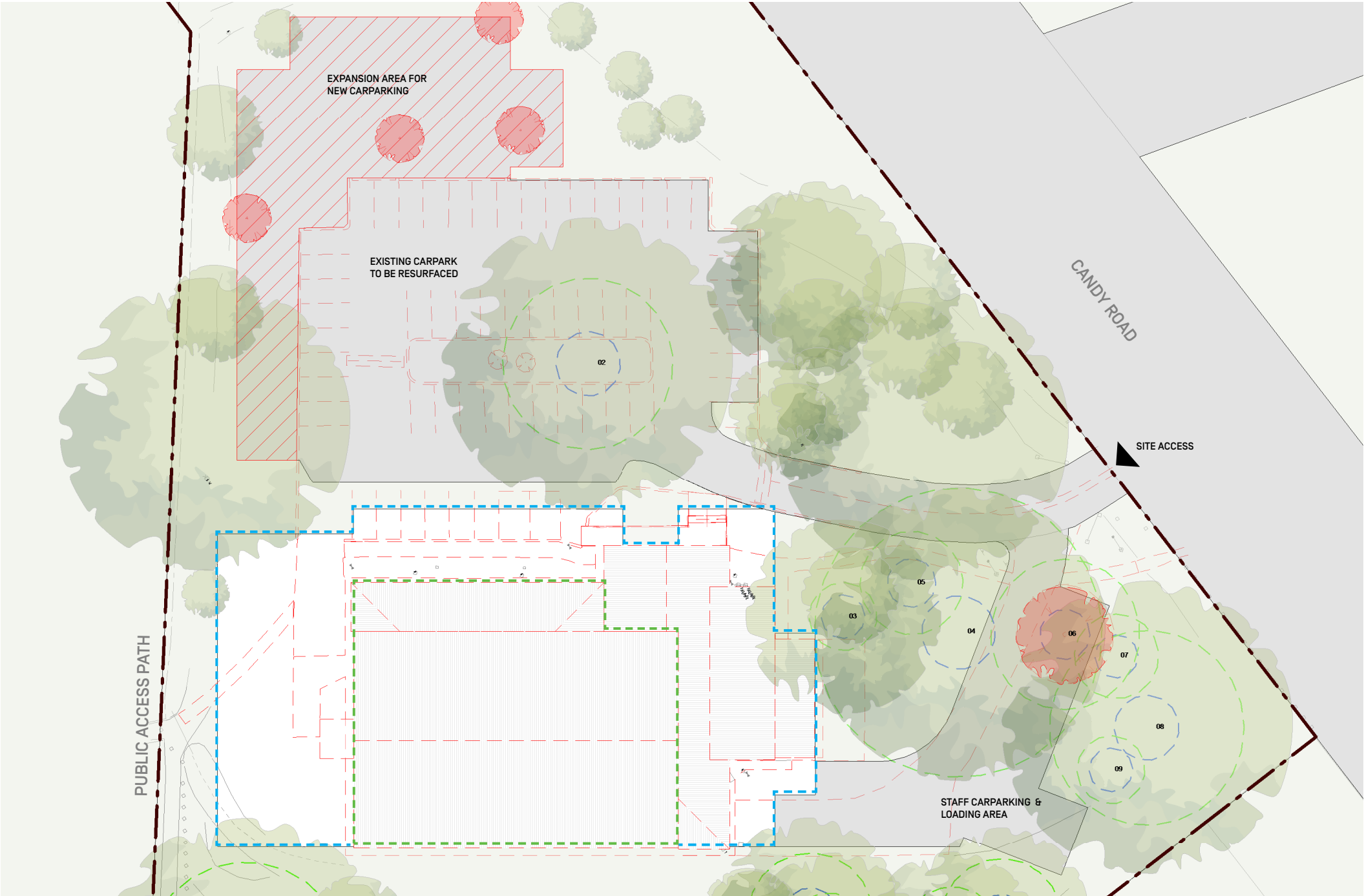
The existing Paul Murray Recreation Centre is a popular and well-utilised space, enjoyed by local residents and participants of Hub Gymnastics. This project aims to **enhance accessibility and create a vibrant destination**, allowing Hub Gymnastics to expand its clientele and programs.

The redevelopment will capture the facility's existing activity and create **separate spaces for the three key user groups**. It will also align the expanded building with the site and existing infrastructure, ensuring a **contextual integration**.

- 1 Paul Murray Recreation Centre
- 2 Car park
- 3 Annie Reserve
- 4 Serpentine Reserve
- 5 Southern Cricket Club
- 6 Happy Valley Scout Group
- 7 Happy Valley Reservoir



DEMOLITION PLAN



Demolition Site Plan
Scale: 1:500 @ A3



- KEY
- Site Boundary
 - - - Areas of demolition
 - - - Site preparation for expanded footprint
 - - - Structure to be retained
 - Trees to be removed

SITE PLAN

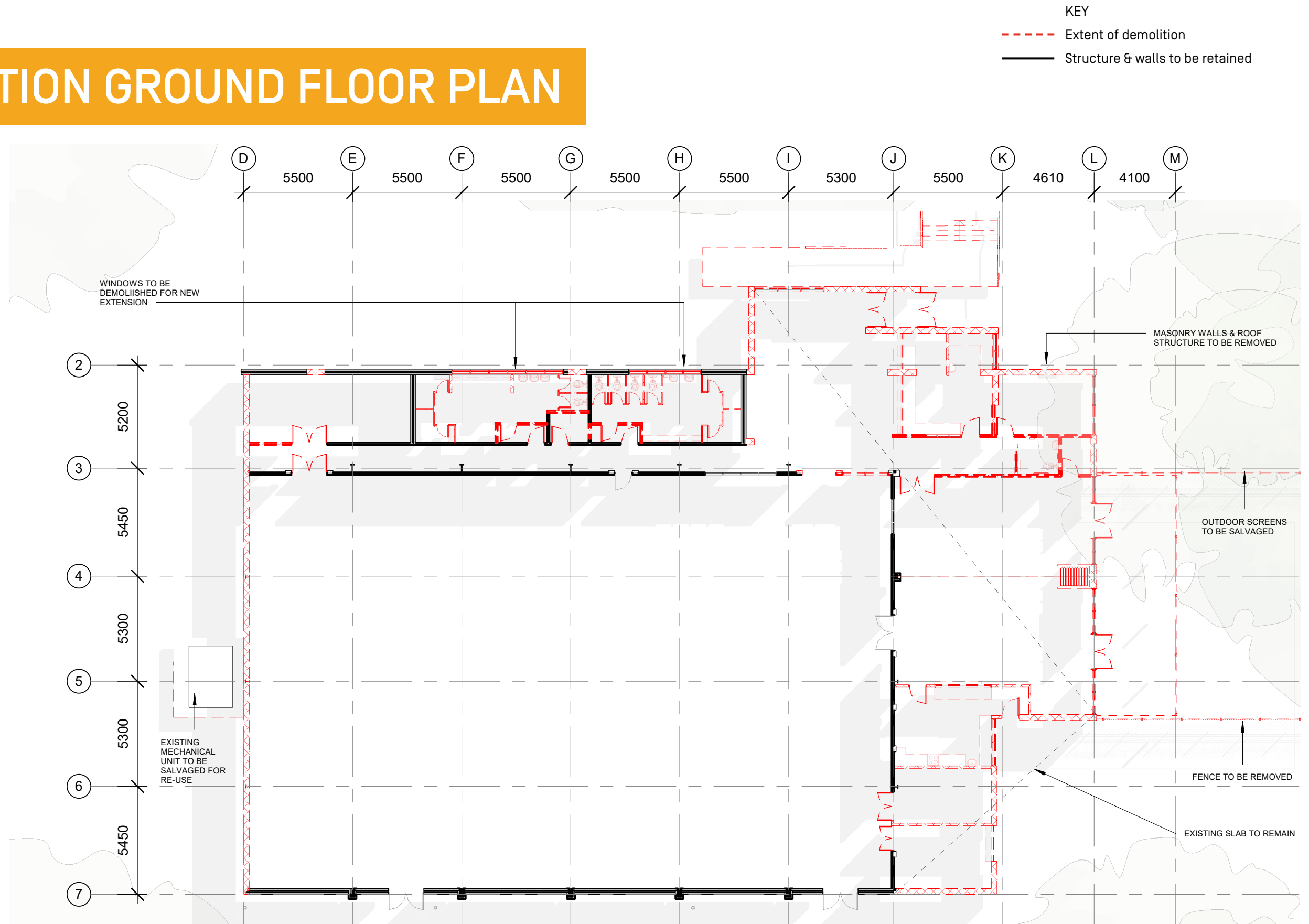


- KEY
- Site Boundary
 - - - Area of works

Site Plan
Scale: 1:500 @ A3



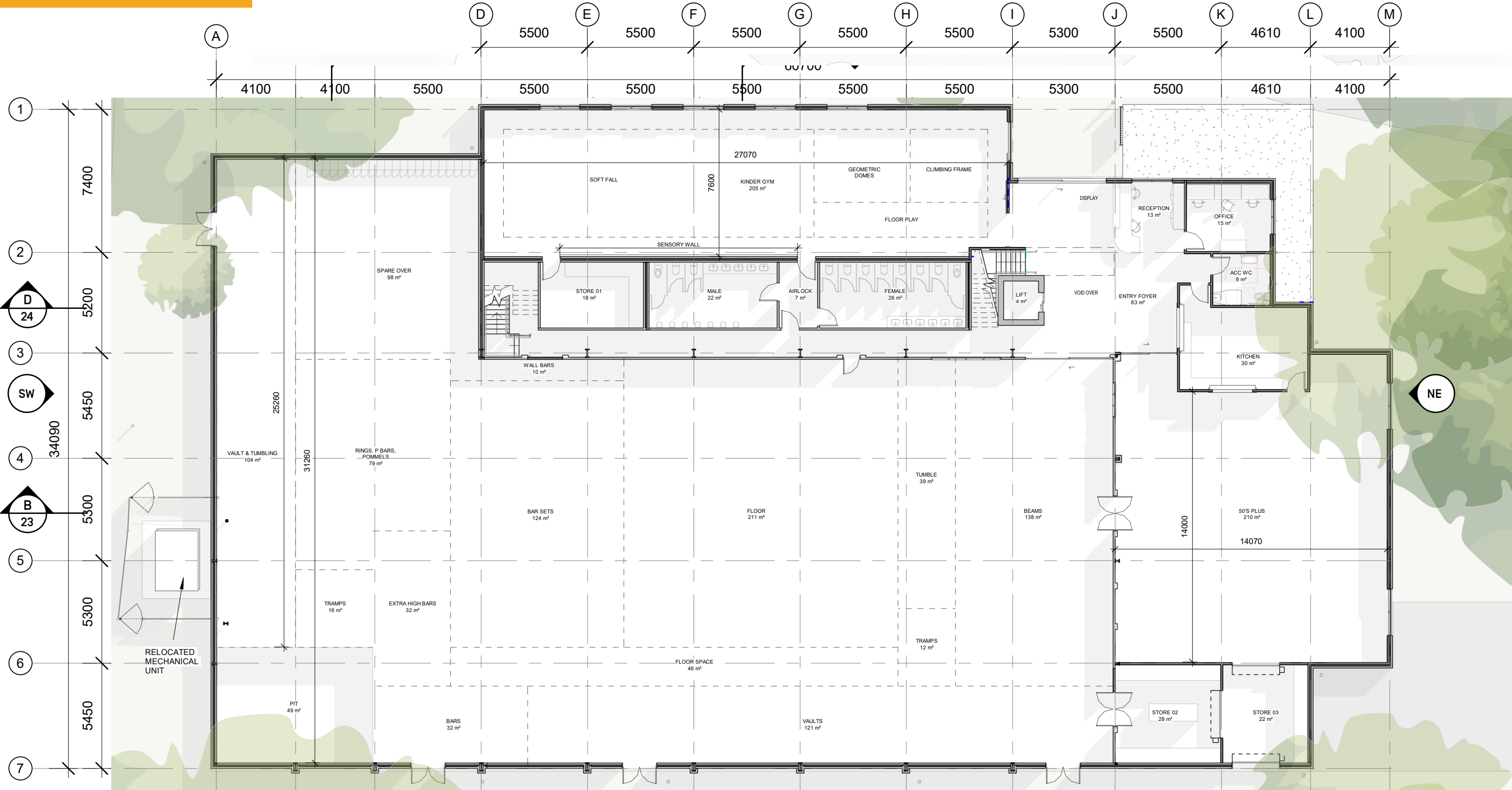
DEMOLITION GROUND FLOOR PLAN



Demolition Ground Floor Plan

Scale: 1:200 @ A3

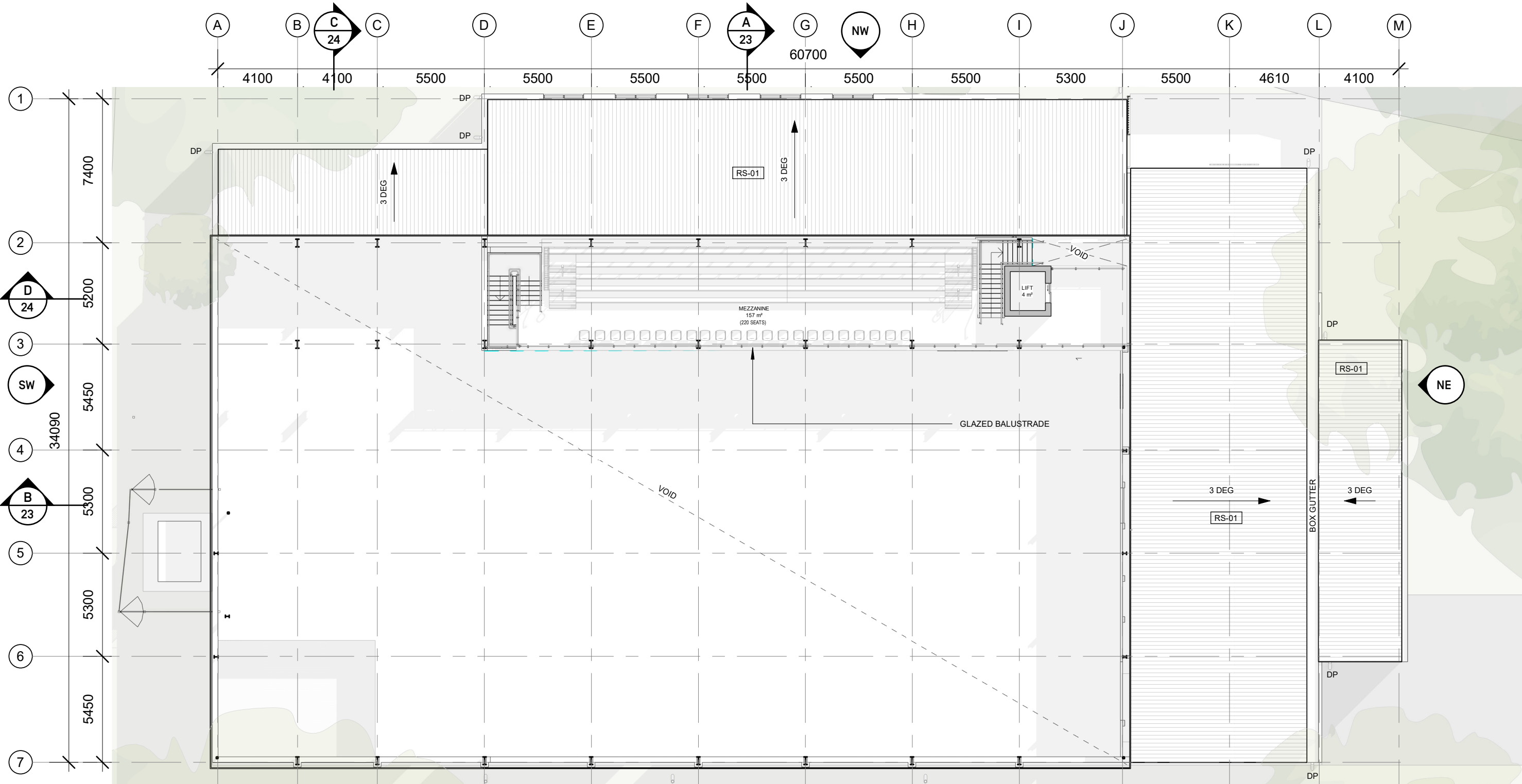
PROPOSED GROUND FLOOR PLAN



Proposed Ground Floor Plan
Scale: 1:200 @ A3

KEY
RS-01 KingKlip 700 Surfmist

PROPOSED MEZZANINE FLOOR PLAN



Proposed Mezzanine Floor Plan
Scale: 1:200 @ A3