

LEGEND

LANDSCAPE

EXISTING TREE TO REMAIN

PROPOSED TREE - EVERGREEN
(REFER PLANT SCHEDULE & DETAILS)

PROPOSED TREE - DECIDUOUS
(REFER PLANT SCHEDULE & DETAILS)

EXTENT OF WORKS SHOWN THUS

NEW FENCE WITH GAP OPENINGS

NEW SERVICES VEHICLE ACCESS GATE

LONG JUMP SANDPIT

THROWING DISCUS BASE PLATE

SHOT PUT BASE PLATE

1500mm WIDE CONCRETE FOOTPATH
(REFER DETAILS)

COMPACTED GRAVEL DRIVEWAY

IRRIGATED TURF

IRRIGATED HYDROSEED LAWN

SURFACE STORMWATER FLOW INDICATOR

KERB RAMP
(REFER TO COUNCIL STANDARD DETAIL)

SANDSTONE RETAINING WALL
(REFER DETAILS)

DESIGN CONTOUR (CONTOURS @ 0.50m INTERVALS)

EXISTING CONTOUR (CONTOURS @ 0.50m INTERVALS)

DESIGN SPOT LEVELS SHOWN THUS

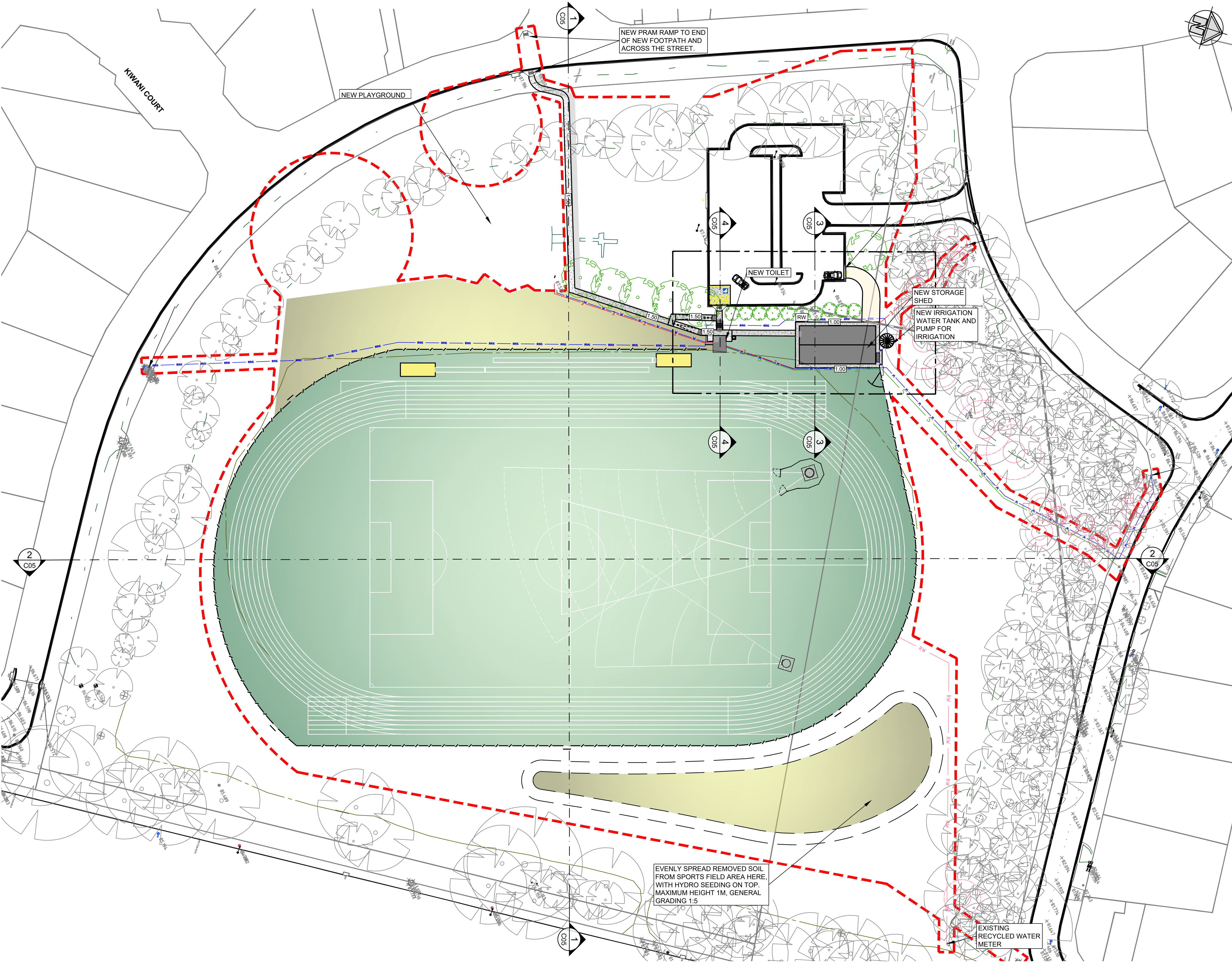
NEW WATER CONNECTION
(INDICATIVE LOCATION ONLY, REFER TO IRRIGATION PLAN FOR DETAIL)

NEW IRRIGATION WATER CONNECTION
(INDICATIVE LOCATION ONLY, REFER TO IRRIGATION PLAN FOR DETAIL)

NEW RECYCLED WATER CONNECTION
(INDICATIVE LOCATION ONLY, REFER TO IRRIGATION PLAN FOR DETAIL)

NEW ELECTRICITY CONNECTION
(INDICATIVE LOCATION ONLY)

CROSS SECTIONS
REFER TO SHEET C05



REV	DESCRIPTION	DRAWN	City of Onkaparinga CHECKED	City of Onkaparinga APPROVED	DATE
1	CONSTRUCTION	K.L.	P.H.	J.W.	29.06.2023

SCALES:

1:500 @ A1

DO NOT SCALE FROM THIS DRAWING

DESIGN BY:

K.L.I.
P.HARDING

DRAWN BY:

K.L.I.
P.HARDING

SHEET SIZE:

A1

CITY OF
ONKAPARINGA

p (08) 8384 0666

www.onkaparingacity.com

KNOX PARK

MORPHETT VALE

MULTI-USE SPORTS PARK UPGRADE

OVERALL LAYOUT PLAN

CONSTRUCTION

City of Onkaparinga
BUSINESS UNIT #

City of Onkaparinga
SURVEY #
5984

City of Onkaparinga
PROJECT #

2022-026

SHEET #

C04

REV #

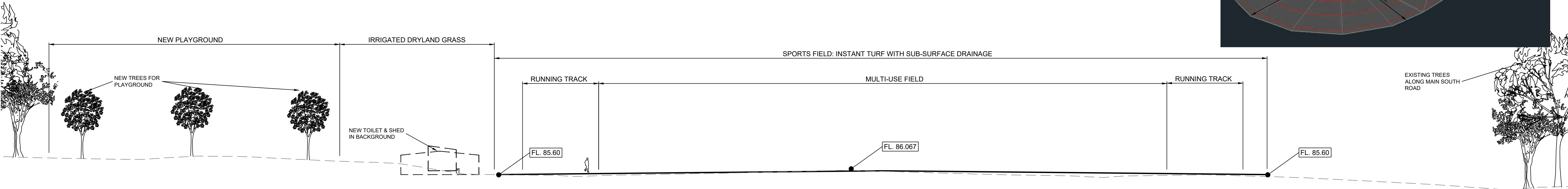
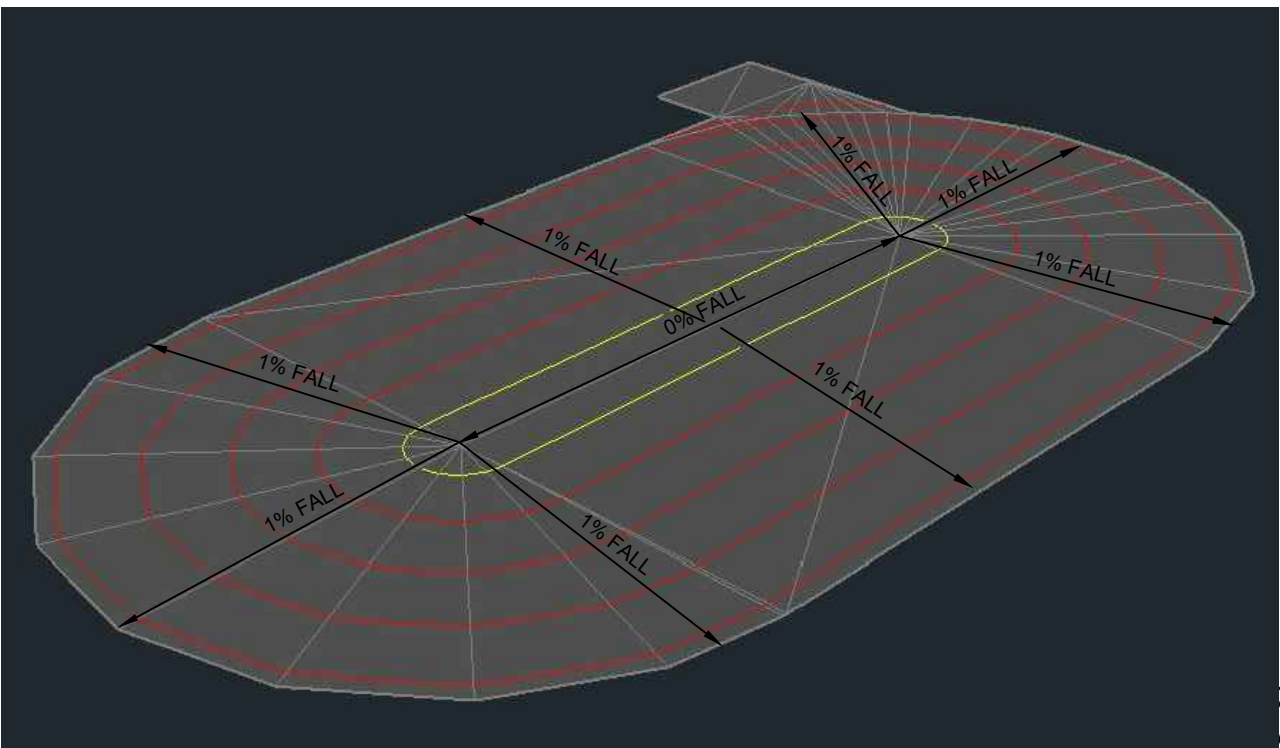
1

LEGEND

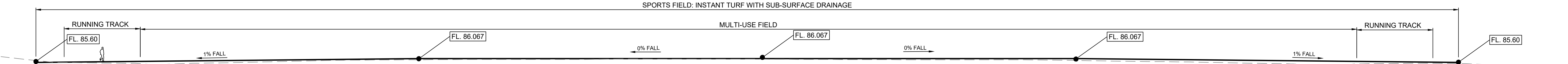
GENERAL

EXISTING SURFACE

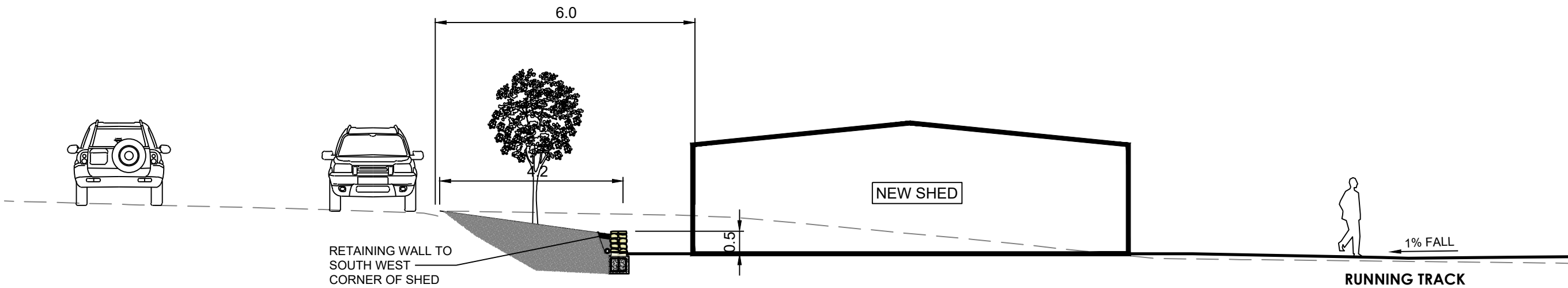
DESIGN SURFACE



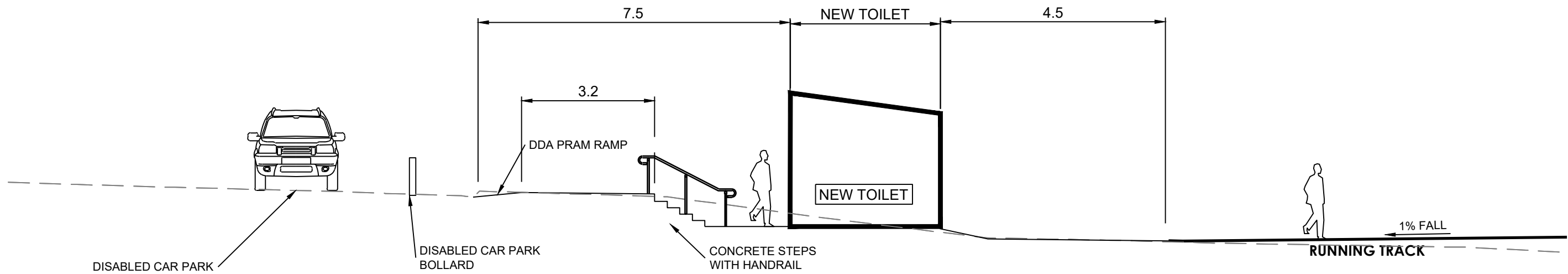
CROWNED PLAYING SURFACE SECTION 1
EAST - WEST SPORTS FIELD CROSS SECTION
1:250 @ A1



CROWNED PLAYING SURFACE SECTION 2
NORTH - SOUTH SPORTS FIELD CROSS SECTION
1:250 @ A1



SECTION 3
NEW SHED CROSS SECTION
1:100 @ A1



SECTION 4
NEW TOILET CROSS SECTION
1:100 @ A1

REV	DESCRIPTION	DRAWN	City of Onkaparinga CHECKED	City of Onkaparinga APPROVED	DATE
1	CONSTRUCTION	K.L.	P.H.	J.W.	29.06.2023

SCALES:

1:250 @ A1

1:100 @ A1

DO NOT SCALE FROM THIS DRAWING

DESIGN BY:
K.L.I
P.HARDING

DRAWN BY:
K.L.I
P.HARDING

SHEET SIZE:
A1

CITY OF ONKAPARINGA

p (08) 8384 0666

www.onkapingacity.com

KNOX PARK

MORPHETT VALE

MULTI-USE SPORTS PARK UPGRADE

CROSS SECTIONS

CONSTRUCTION

City of Onkaparinga
BUSINESS UNIT #

City of Onkaparinga
SURVEY #

City of Onkaparinga
PROJECT #

SHEET #

REV #

2022-026

C05

1

PLANTING SCHEDULE

CODE	BOTANICAL NAME	COMMON NAME	SPACING	SIZE/HEIGHT	QTY
TREES					
Esc	Eucalyptus scoparia	Wallangarra white gum	TBD ON SITE	1.8m HIGH	13
Esi	Eucalyptus sideroxylon	Red ironbark	TBD ON SITE	1.8m HIGH	17
Fm	Ficus macrophylla	Moreton Bay fig	REFER PLAN	1.8m HIGH	1
Hf	Hymenosporum flavum	Native Frangipani	REFER PLAN	1.8m HIGH	5
Li	Lagerstroemia indica x fauriei 'Tuscarora'	Crepe Myrtle	REFER PLAN	1.8m HIGH	10

PLANT
2 GROUP OF 3 X Esi
1 GROUP OF 5 X Esc

TREES TO BE
IRRIGATED VIA
IRRIGATION
SYSTEM

TREE LOCATION TO
BE DETERMINED ON
SITE

PLANT
1 GROUP OF 3 X Esi
1 GROUP OF 5 X Esc

TREES TO BE
IRRIGATED VIA
IRRIGATION
SYSTEM

TREE LOCATION TO
BE DETERMINED ON
SITE

PLANT
1 GROUP OF 3 X Esi

TREES TO BE
IRRIGATED VIA
IRRIGATION SYSTEM

TREE LOCATION TO
BE DETERMINED ON
SITE

PLANT
1 GROUP OF 3 X Esc

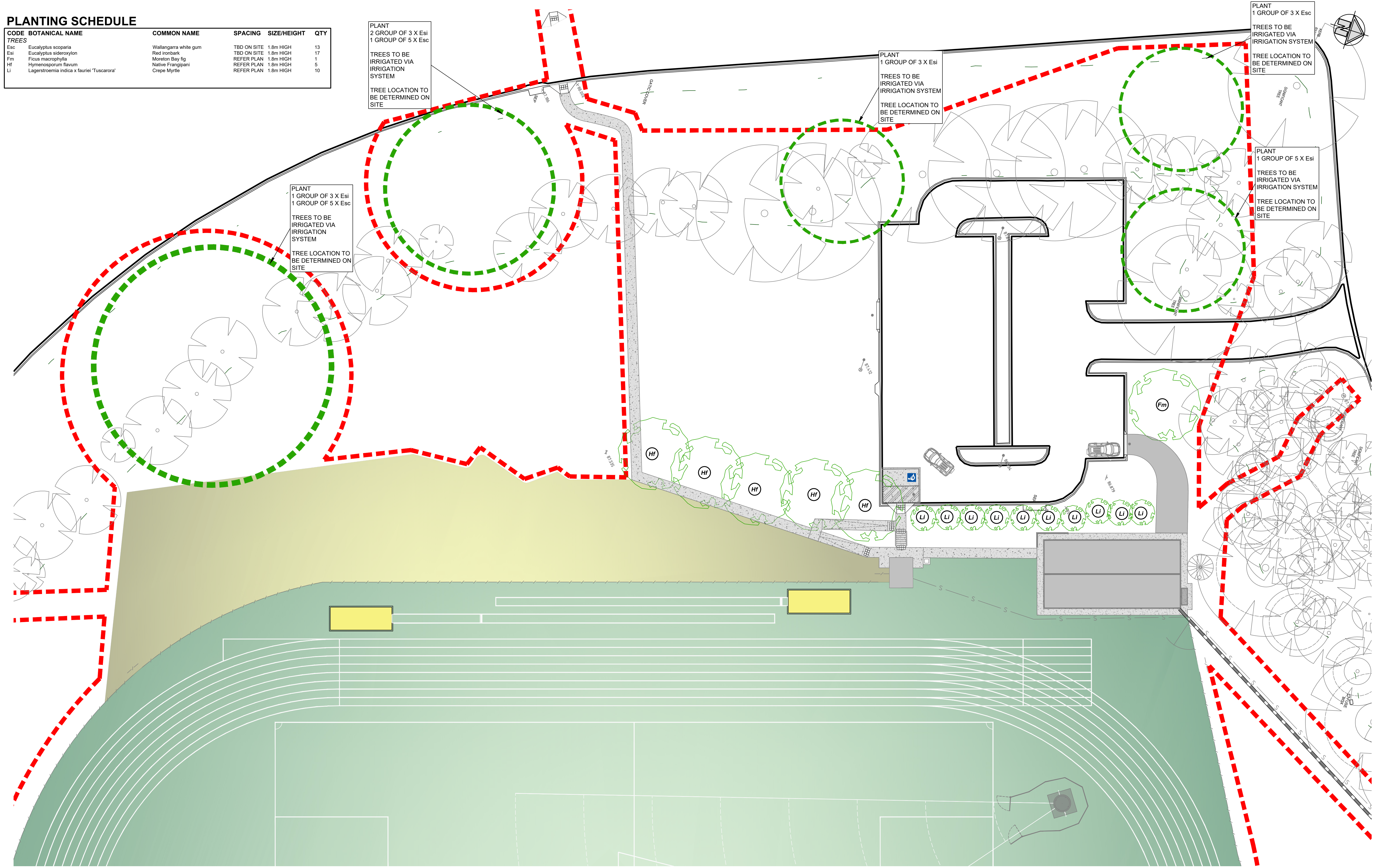
TREES TO BE
IRRIGATED VIA
IRRIGATION SYSTEM

TREE LOCATION TO
BE DETERMINED ON
SITE

PLANT
1 GROUP OF 5 X Esi

TREES TO BE
IRRIGATED VIA
IRRIGATION SYSTEM

TREE LOCATION TO
BE DETERMINED ON
SITE



REV	DESCRIPTION	DRAWN	City of Onkaparinga CHECKED	City of Onkaparinga APPROVED	DATE
1	CONSTRUCTION	K.L.	P.H.	J.W.	29.06.2023

SCALES:
1:250 @ A1

0 2.5 5 10 15m

DO NOT SCALE FROM THIS DRAWING

DESIGN BY:
K.L.I
P.HARDING

DRAWN BY:
K.L.I
P.HARDING

SHEET SIZE:
A1



KNOX PARK
MORPHETT VALE
MULTI-USE SPORTS PARK UPGRADE
PLANTING PLAN

CONSTRUCTION

City of Onkaparinga
BUSINESS UNIT #

City of Onkaparinga
SURVEY #
5984

City of Onkaparinga
PROJECT #

SHEET #
C08

REV #
1